



Stainless Steel Mesh Security System



Contents

3	About ScreenGuard
4	Features and Benefits
6	Product Testing
8	ScreenGuard Windows
10	ScreenGuard Doors
12	ScreenGuard Patio Enclosures
14	Fire Attenuation Testing
16	ScreenGuard Extreme
18	ScreenGuard Extreme System Benefits and Technical Specifications
20	ScreenGuard ACCESS Fire Escape System
22	10 Year Warranty
24	Care and Maintenance
26	ScreenGuard Powawash



ABOUT SCREENGUARD

The ScreenGuard Stainless Steel Security Mesh System for windows and doors is designed to protect your family and your view. No longer do you need to look at unsightly grilles, bars or other obstructions that spoil your view. Enjoy the finest in security screens with ScreenGuard 316 stainless steel mesh protection.

ScreenGuard security screens and doors are made with high tensile 316 marine grade stainless steel

mesh that provides strength and quality. While ScreenGuard's unique 6063 aluminium frames are tempered to T6, using state-of-the-art equipment.

The anti-corrosion stainless steel wire mesh is coated with a specialised UV protective coating that provides a clear long lasting finish. ScreenGuard's patented security system, meets and exceeds Australian standard AS 5039-2023.

The ScreenGuard range consists of:

- Hinged Door
- Sliding Door
- Windows
- Multi-fold Door
- Fixed Screening
- Fire Escape Window System
- Enclosure for Patios



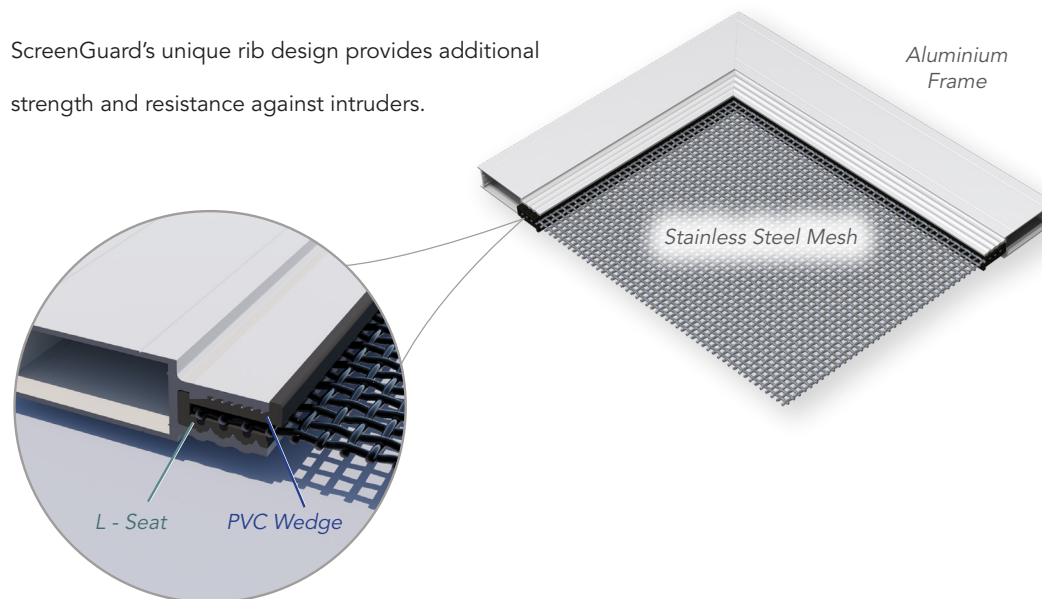


FEATURES AND BENEFITS

The features and benefits are:

- Corrosion resistant
- Australian designed and engineered
- Resistant against mesh removal
- Easy to fabricate and install
- Made from 6063 T6 extruded aluminium
- Made from high tensile 316 marine grade stainless steel mesh
- Tested to Australian Bushfire rating BAL 40
- Tested to Australian Standards AS 5039-2023
- Tested to Australian Standards Fire Attenuation AS1530.4-2014 Appendix B7
- ScreenGuard has met the new requirement of 200 joules (SL200) for dynamic impact testing.

ScreenGuard's unique rib design provides additional strength and resistance against intruders.





DYNAMIC IMPACT TEST

Australian Standard AS5039.1:2023 Security Door and Window Screens, Part 1: comprises of Classification and Performance of all types of security doors and window screens.

AS5039.3:2023 relates to methods of testing these doors and screens. The energy level for dynamic impact testing has increased from 100 joules (SL100) to 200 joules (SL200). The ScreenGuard Classic and ScreenGuard Extreme security systems have successfully met and exceeded this new requirement of 200 joules (SL200) during dynamic impact testing.

DYNAMIC IMPACT TEST	TEST NO.	PASS
Hinged Security Screen Door	AZT0222.24	Y
Sliding Security Screen Door	AZT0223.24	Y
Access Fire Escape	AZT0290.14	Y
Security Window Grille	AZT0224.24	Y



KNIFE SHEAR TEST

Australian Standard AS5039-2023 Security Screen Doors and Security Windows Grilles.

Another important successful feature of ScreenGuard is its resistance to knife attack by passing the Australian standard requirements simulating an intruder trying to gain entry using a utility knife.

KNIFE SHEAR TEST	TEST NO.	PASS
ScreenGuard Mesh	AZT0225.24	Y



ANTI-JEMMY TEST

Australian Standard AS5039-2023 Security Screen Doors and Security Windows Grilles.

ScreenGuard successfully passed jemmy attack testing simulating an intruder attacking with items such as screwdrivers and a large amount of force. Testing has been repeated for a range of major hardware products sold by Darley Aluminium to give customers a range of locking options.

ANTI-JEMMY TEST	TEST NO.	PASS
Hinged Security Screen Door	AZT0222.24	Y
Sliding Security Screen Door	AZT0223.24	Y
Security Window Grille	AZT0224.24	Y



SALT SPRAY BATH TEST

Australian Standard AS2331.3.1 Methods of test for Metallic and related coatings.

The salt spray bath test is used to determine the corrosion resistance of materials and surface coatings. ScreenGuard has been tested and exposed to over 2,000 hours in salt spray chamber and showed no signs of corrosion.

SALT SPRAY BATH TEST	PASS
(includes 304 & 316 mesh)	Y



FIRE ATTENUATION

Australian Standard AS1530.4-2014 Appendix B7.

Assists in protecting fire and radiant heat spread between buildings in the event of a fire.

FIRE ATTENUATION TEST	TEST NO.	PASS
Achieves a fire attenuation rating of up to 46% at 40kW/m2 incident energy	FRT210145	Y
SCREENGUARD ACHIEVES A MARKET LEADING FIRE ATTENUATION TIME OF 3 HOURS AND 10 MINUTES.		



BUSHFIRE RATED

Australian Standard AS3959-2018 Construction of buildings in bushfire-prone areas.

ScreenGuard is bushfire-rated and protects your property from floating embers and reduces heat intensity of radiant heat flux.

BUSHFIRE TEST	PASS
BAL40 rating for Screenguard	Y



CHILD FALL PREVENTION

Protection of openable windows.

With appropriate installation, ScreenGuard has proven to be a suitable option to help prevent children from falling from high windows.

OUTWARD FORCE TEST	PASS
Resist 250N Outward Force	Y

SCREENGUARD PRODUCT TESTING

ScreenGuard's patented security screen products

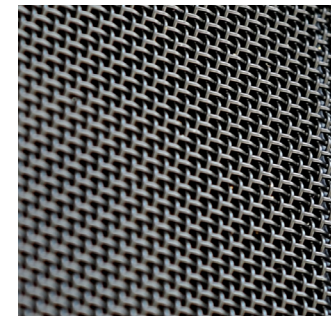
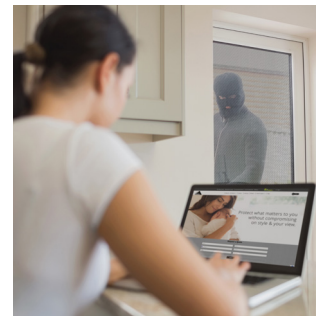
have been tested and meet Australian Standard AS5039-2023. These tests are designed to simulate an attack using force to gain entry into a home.

In recent changes to AS5039:2023, the energy level for dynamic impact testing has increased from 100 joules (SL100) to 200 joules (SL200).

The ScreenGuard Classic and ScreenGuard Extreme security systems have successfully met and exceeded this new requirement of 200 joules (SL200) during dynamic impact testing.



All testing is carried out by a NATA registered independent testing laboratory according to strict Australian standards.





SCREENGUARD WINDOWS

ScreenGuard is available to suit a number of window screen options including a fixed window screen, double hung window screen, awning & casement window, sliding window and louvre windows.

Fixed window screens are designed to be fixed in place and cannot be moved, these screens are typically installed in the flyscreen track of the window.

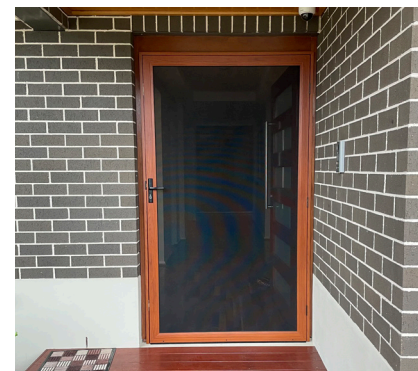
Another popular option is **ScreenGuard sliding windows**.

Available as single or multiple panel sliding windows, they can also be custom-fitted to a variety of window shapes and sizes, including casement windows.

Seamlessly connect your indoor space with the outdoors by adding a **ScreenGuard servery window**

and creating an alfresco entertainment area. The addition of the servery window will turn a blank wall into functional bench space, allowing in more light and ventilation.





SCREENGUARD DOORS

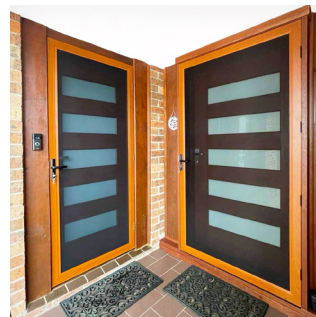
One of the most popular options in security doors are the ScreenGuard hinged and sliding doors.

All **ScreenGuard hinged and sliding doors** have been tested according to Australian Standards AS5039-2023. ScreenGuard offers the ultimate in security, without compromising on visibility.

The **ScreenGuard ScreenFold** is a popular option for outdoor entertaining and can extend your living space.

It is made from 316 marine grade stainless steel and can be fabricated in multiple panels. It can also be custom-fitted to the widest of indoor or outdoor

spaces and provides an unobstructed view of the outdoors.





SCREENGUARD PATIO ENCLOSURES

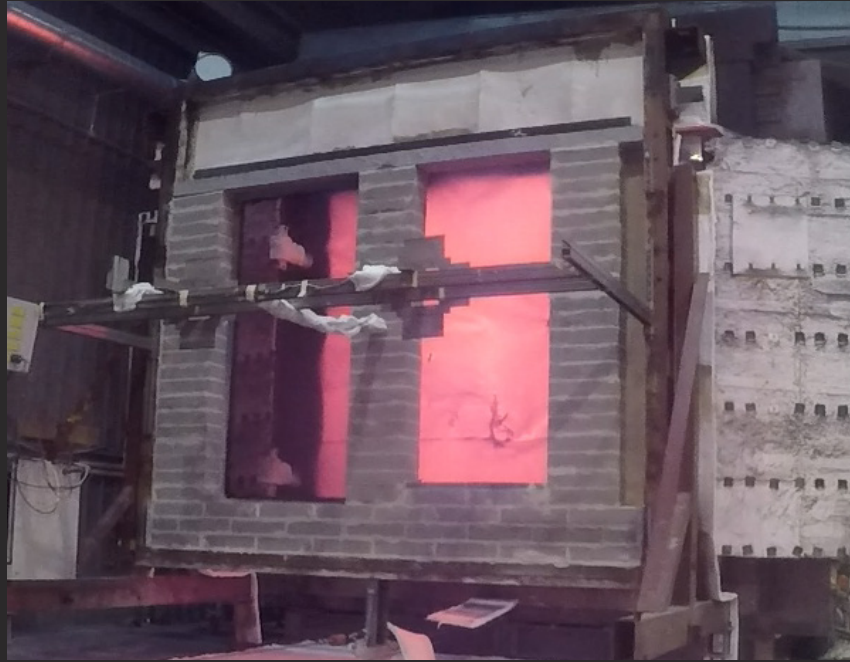
ScreenGuard is also available as a patio enclosure

– a popular option for lovers of the great outdoors.

ScreenGuard can be fabricated as a patio enclosure or an enclosed outdoor area, that not only provides security but also keeps out insects and other pests.

With 316 marine grade stainless steel mesh technology, this patented system provides ventilation and a natural breeze, as well as uninterrupted views.





FIRE ATTENUATION TESTING

ScreenGuard has undergone stringent bushfire testing to ensure quality performance in the event of a bushfire.

- BAL 40 Rating
- 40.2 kW/m² Heat Flux Tested
- 46% Fire Attenuation
- Floating Ember Safe
- Universal Installation Into Any System

ScreenGuard screens use specially designed fire retardant L seats and co-extruded wedges. The stainless steel mesh used in ScreenGuard complies with bushfire ember resistance regulations.

Fire attenuation is the reduction of radiant heat and spread of flames between buildings, in the unfortunate event of a fire.

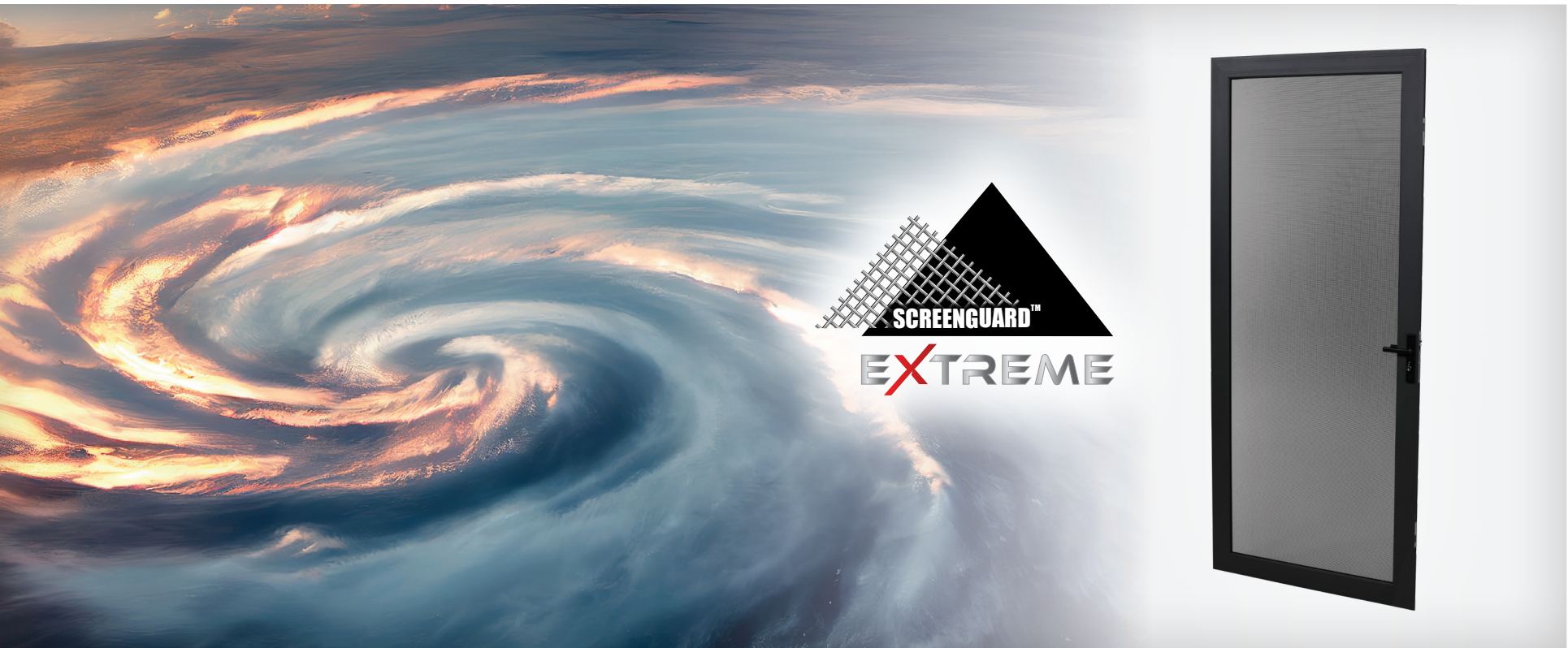
To protect properties from this spread of fire and radiant heat, the Building Code of Australia (BCA) requires fire attenuation screening be installed in any openings, that are within three metres of a fire source or within six metres of another building on the same property.

A fire attenuation test was recently performed on our

ScreenGuard Security system by Warrington fire. Our ScreenGuard security screens achieved a fire attenuation rating of up to 46% at 40kW/m² incident energy for a period of 3 hours and 10 minutes.

ScreenGuard security screens are rated for fire attenuation and provide protection against the spread of fire via flames & radiant heat, between buildings.







SCREENGUARD EXTREME

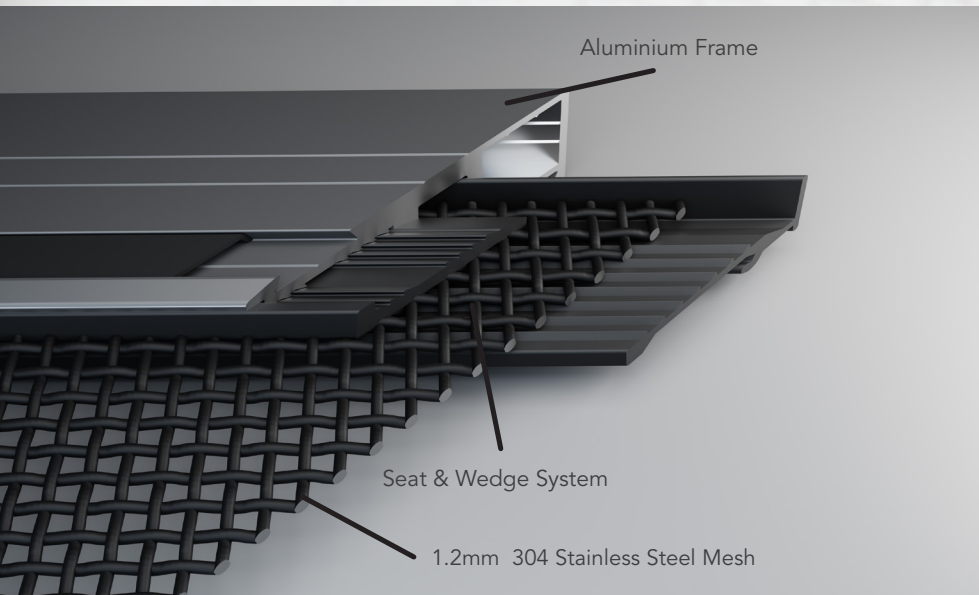
Keep your family and home safe with the ScreenGuard Extreme stainless steel mesh system. Specially designed to provide protection against intruder attacks and extreme weather including cyclone, ScreenGuard Extreme is tested to Australian Standard AS5039-2023.

Made from high tensile 1.2mm 304 stainless steel

mesh and high quality aluminium frame, ScreenGuard is manufactured using the our unique two part wedge and seat technology, making it stronger than other security doors on the market.

The ScreenGuard Extreme system is custom-made and can integrate seamlessly into the style & aesthetic of your home while enhancing your home's security.





ScreenGuard Extreme System Benefits



Tested to AS1170.2-2021 & AS5039-2023



Corrosion Resistant



Compatible with a range of hardware



Backed by a 10 year warranty



SCREENGUARD EXTREME TECHNICAL SPECIFICATIONS

APPLICATIONS

ScreenGuard Extreme is available in a variety of applications including as a hinged door, sliding door, window screen, patio enclosure.

MESH TYPE

Made with high quality 304 stainless steel mesh with a mesh strand size of 1.2mm.

WARRANTY

The ScreenGuard Extreme security system is backed by a 10 year warranty.



AUSTRALIAN STANDARDS

ScreenGuard Extreme has been tested to and exceeds Australian Standards AS5039-2023 and AS1170.2-2021

COLOUR

The aluminium frame used in the ScreenGuard Extreme system can be powdercoated in a variety of colours to match the style and aesthetic of your home.



SCAN THE
QR CODE

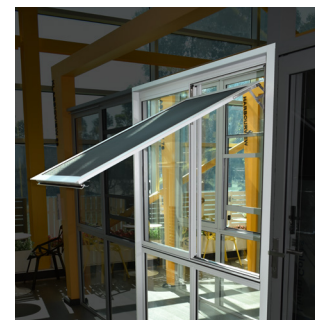


SCREENGUARD ACCESS FIRE ESCAPE SYSTEM

ACCESS® Fire Escape Systems are integrated into the ScreenGuard system for a quick and easy escape in the event of a house fire or any other emergency. A simple and quick latching system enables you to only open the window from the inside.

ACCESS® features include:

- A unique built-in locking action
- Stays open while you escape
- No need for additional locks
- Stainless Steel 4-bar hinge system
- Anti-Jemmy internal frame system
- Awning or casement configuration



SCREENGUARD



ACCESS®
Awning Casement Cleaning Escape Servery Security



10 YEAR WARRANTY

ScreenGuard product warranty is for 10 years

from the date of product installation.

This warranty is to the original purchaser providing that the product care and maintenance recommendations have been complied with during

that period. ScreenGuard warrants its product to be free from defects in materials and manufacturing when fabricated in accordance with the ScreenGuard fabricator instructions.



SCREENGUARD

Network of Licensed ScreenGuard Fabricators



CARE AND MAINTENANCE

Your **ScreenGuard security screen system** will require regular maintenance to remove contaminants caused by pollution, industry, salt and climatic conditions.

The preferred method for cleaning your ScreenGuard security system is to use PowaWash biodegradable detergent – please see cleaning instructions below.

Alternatively, if no PowaWash is available, it is recommended to use a soft bristled brush with warm

water and a neutral PH detergent. Abrasive cleaners and harsh detergents are not recommended as these can scratch or damage the surface area.

The following table indicates the frequency of maintenance.

ENVIRONMENT	DEFINITION	FREQUENCY
Mild	15km from coastal / rural / suburban areas	Every 6 months
Moderate	10km from coastal / high traffic areas	Every 3 months
Severe / Coastal	5km from coastal / marine / heavy industrial areas	Every 2 weeks





SCREENGUARD POWAWASH

Regular maintenance with ScreenGuardPowaWash

is required to comply with your ScreenGuard 10 year warranty.

Mix 3 caps (25ml) per Litre of water. It is recommended to use a soft bristled brush or non-abrasive cloth, then rinse with water.

ScreenGuard Powawash is:

- non-toxic
- biodegradable
- user-friendly
- environmentally friendly

Available in 100ml bottles.

100ml	Code: 1966-SGL
-------	----------------



SCREENGUARD



SYDNEY HEAD OFFICE

8 Tyrone Place, Erskine Park NSW 2759

Tel: (02) 8887 2888

Fax: (02) 9834 3244

Email: sales@darleyaluminium.com.au

MELBOURNE

10 Bridge Road, Keysborough VIC 3173

Tel: (03) 9238 3888

Fax: (03) 9768 7288

Email: salesvic@darleyaluminium.com.au

BRISBANE

29 Access Avenue, Yatala QLD 4207

Tel: (07) 3287 1888

Fax: (07) 3287 2088

Email: salesqld@darleyaluminium.com.au

PERTH

36 Armstrong Road, Hope Valley WA 6165

Tel: (08) 9437 2999

Fax: (08) 9437 1024

Email: saleswa@darleyaluminium.com.au

Contact your local fabricator:



AUSTRALIAN
**GLASS &
WINDOW**
ASSOCIATION
MEMBER